



For a healthy  
start in life

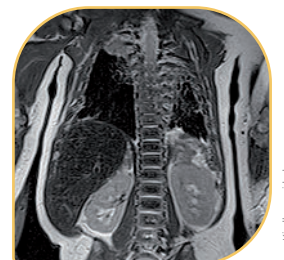


## 12-CHANNEL BODY ARRAY COIL 1.5 / 3.0T

- 12-channel Array, consisting of 2 elements, can be used separately or together as appropriate, comprised of:
  1. part integrated in patient`s bed (8-channels)
  2. part as separate coil (4-channels)
- High-resolution MR Imaging of the body of newborns and premature babies, with a weight of up to approx. 4,500g
- Approved for use inside MR Diagnostics Incubator System **nomag**<sup>®</sup>IC *ADVANCED*

Compatible with leading MRI devices like Siemens, Philips, GE  
Further details upon request

Change of technical specification without notice



Kindly provided:  
Clinical Hospital Center, Zagreb, Croatia

