

The clear answer in point-of-care ultrasound.

What you do in seconds can change everything.



Butterfly iQ3
Butterfly Network



Streamline care when every second counts

Whole-body, single-probe solution

Faster clinical decisions

Built-in AI tools

Rapid assessments in time-sensitive situations

Immediate start time

Onboarding support and continuous learning

On-demand education

Uninterrupted scans

Long battery life

Confidence at every scan

Best-in-class image quality



From Emergency Medicine to Anesthesiology, Primary Care and beyond: One tool. Every patient.



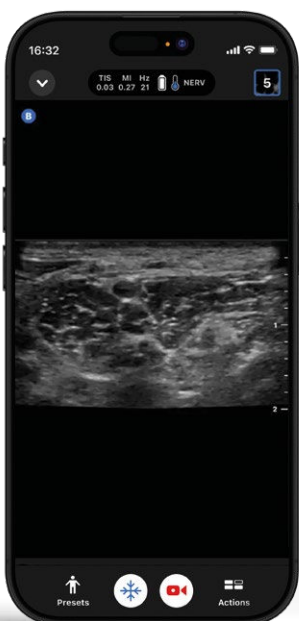
Emergency Medicine

Rapid trauma scans. Rule out pneumothorax or pleural effusion. Guide resuscitation —all in seconds.



Critical Care

Immediate line placement. Lung and cardiac assessments. Fast fluid responsiveness checks.



Anesthesiology

Visualize nerves for regional blocks, place lines with precision, and confirm airway status in seconds.

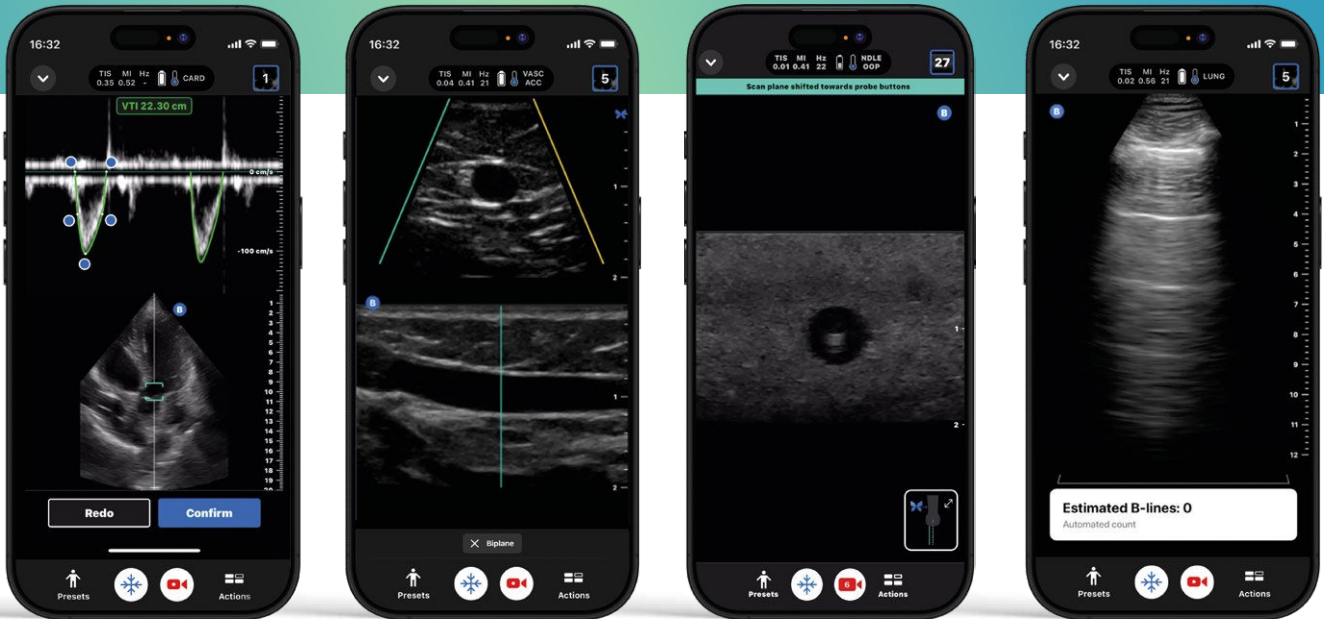


Primary Care

Musculoskeletal imaging, early pregnancy assessment, pneumonia evaluation, and general diagnostics — without referrals.

Modern diagnostics with advanced imaging tools.

Butterfly iQ3™ brings advanced imaging technology to your fingertips for faster, more confident decisions.



Cardiac Output

A tool in the iQ3 cardiac presets that helps calculate cardiac output – providing you with data to assess fluid responsiveness and much more.

Biplane Imaging™

The world's first handheld POCUS Biplane Imaging makes it possible to see the short and long axis of your scan in real-time – adding confidence to your procedures and cardiac imaging.

Needle: Out-Of-Plane

A preset designed for earlier needle tip visualization, within 1mm from the entry point, enabling more successful procedures.

Auto B-line Counter

AI-Powered

Produces a B-line count from just a six-second ultrasound clip, simplifying dyspnea assessment.

And that's not all—Butterfly iQ3 also brings you advanced tools like Auto Bladder Volume Calculation for AI-enabled bladder assessment, Needle Viz™ for precision procedures, Subxiphoid Tilt for enhanced cardiac views, and much more to meet the demands of every specialty.



Sharp imaging without lead-heavy crystals.

Butterfly iQ3 is built with your patients—and your practice—in mind. While many traditional ultrasound probes contain high levels of lead and rely on temporary regulatory exemptions, Butterfly uses advanced chip-based technology that meets RoHS safety standards without needing an exemption.

What is RoHS?

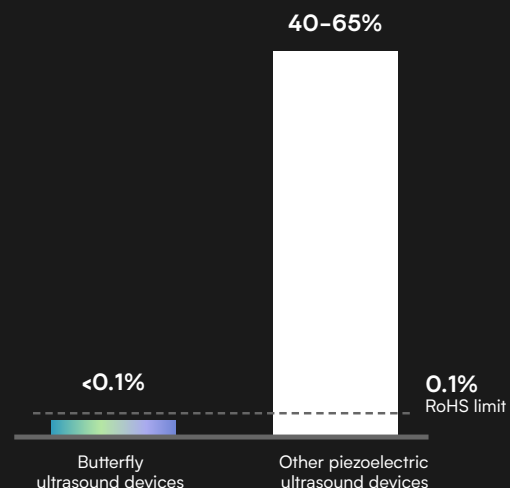
RoHS (Restriction of Hazardous Substances) is a European safety standard that limits harmful materials—like lead—in electronic devices. Fully RoHS-compliant devices, like Butterfly iQ3, meet strict safety limits without relying on temporary exemptions.

Butterfly cMUT ultrasound devices meet RoHS compliance.

Butterfly's ultrasound devices based on the semiconductor (cMUT) technology meet the RoHS limits - maximum allowable concentration of lead of 0.1%.

Piezoelectric ultrasound devices are RoHS exemption compliant.

Lead concentration in traditional piezoelectric ultrasound devices typically varies between 40%-65%. These devices are allowed under a temporary exemption (7-(c)-I Annex IV), whose renewal is under review.



Make a sustainable choice today—for your patients, your team, and the planet.

Ready to bring the power of point-of-care ultrasound to your practice?

Request a demo at butterflynetwork.com/iQ3